



Communications Pte Ltd

28 April 2009

Subject: Environmental and Staff Passionate Ship Supplies Company
Joo Yong Co., (Pte) Ltd.
11, Joo Yee Road
Tel : 63771771 Fax : 63771330

Objective: Removing the Heat out from it Premises with SOLACOAT





Communications Pte Ltd

Contents

- 1) Equipment deployed to determine the Roof Temperature**
- 2) Thermal Pictures - Before Solacoat applications – Exterior Warehouse**
- 3) Thermal Pictures - Before Solacoat applications – Interior Warehouse**
- 4) Pictures - Before and After completion of Solacoat applications**
- 5) Thermal Pictures – Before and After Solacoat applications- Exterior Warehouse**
- 6) Thermal Pictures – Before and After Solacoat application – Interior Warehouse**
- 7) Findings and Conclusion**

SOLACOAT
TAKES THE HEAT OUT OF THE ENVIRONMENT





Communications Pte Ltd

Equipments deployed to determine the Roof Temperatures

1) Digital Thermometer from Fluke



2) Thermal Imaging from Flir

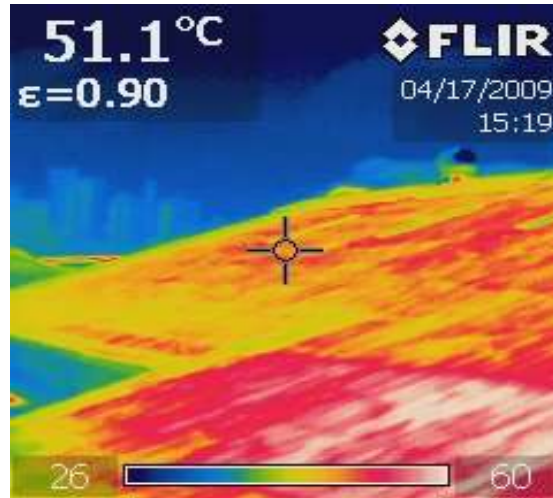
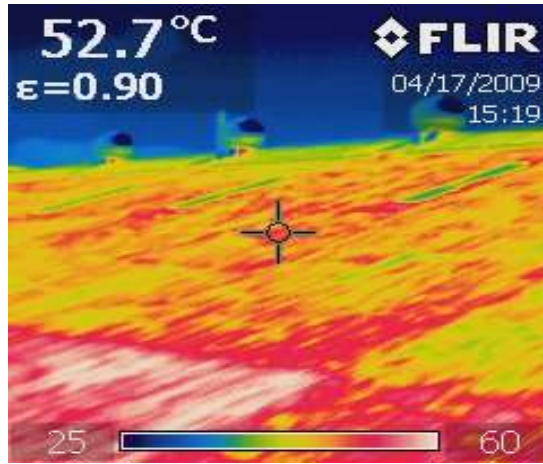


3) Mercury Thermometer – To Track the Ambient Temperature





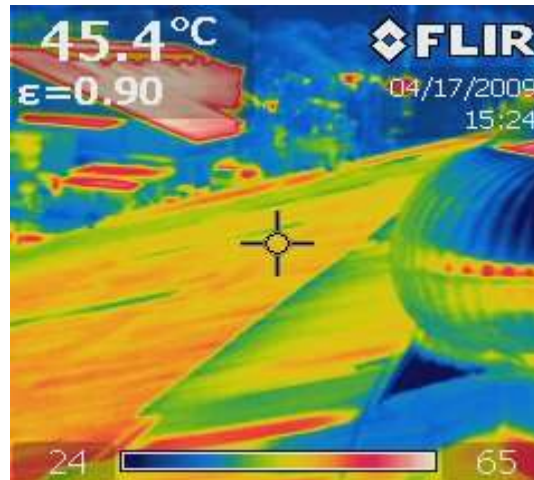
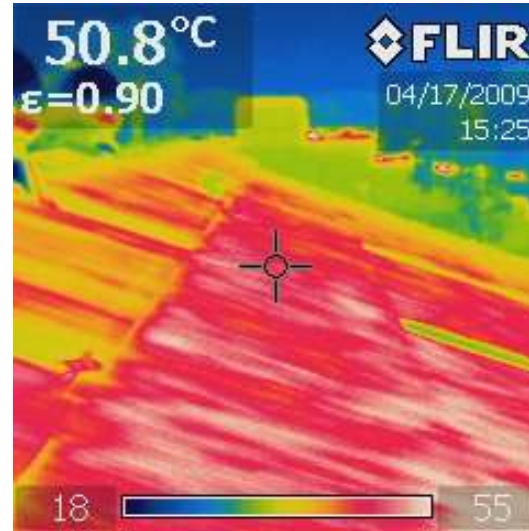
Thermal Picture - Before SolaCoat Applications – Exterior Warehouse





Communications Pte Ltd

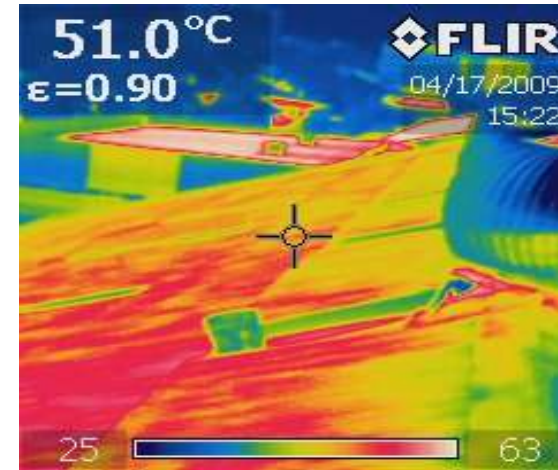
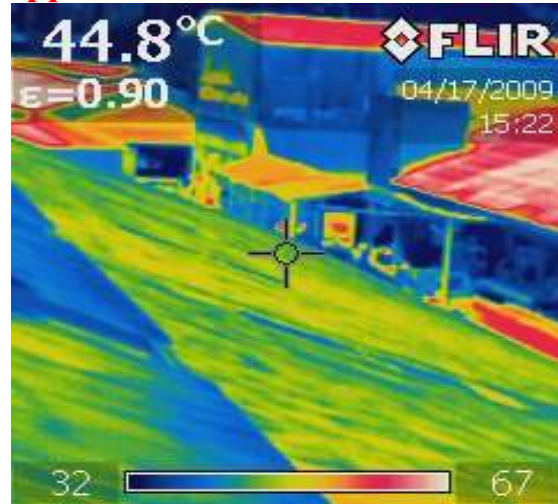
Thermal Picture - Before SolaCoat Applications – Exterior Warehouse





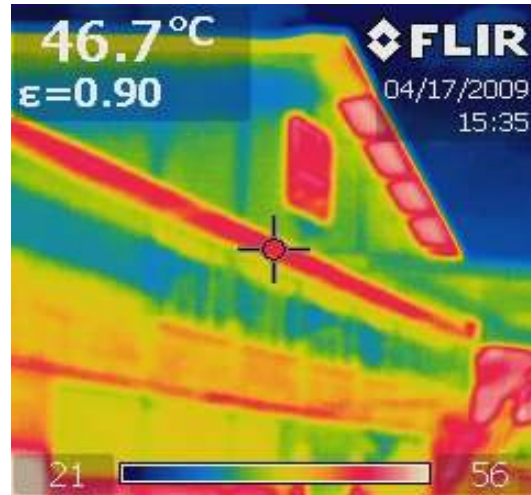
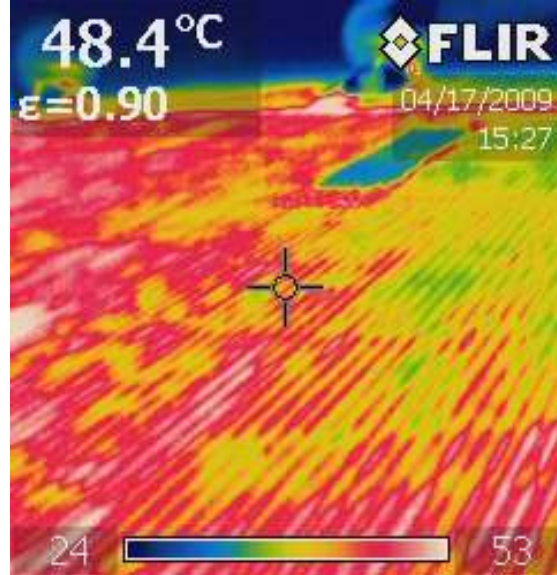
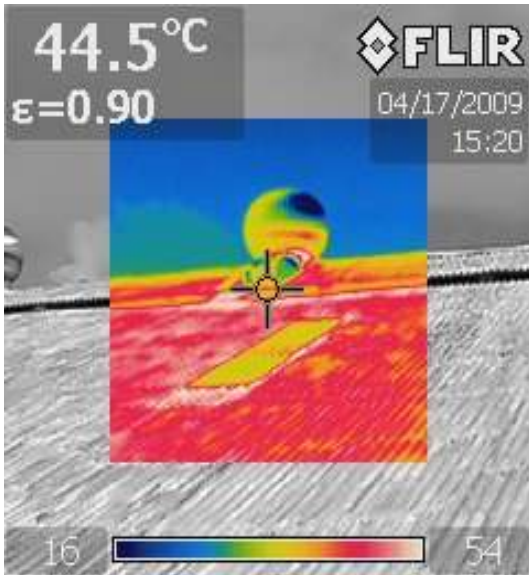
Communications Pte Ltd

Thermal Picture - Before SolaCoat Applications – Exterior Warehouse



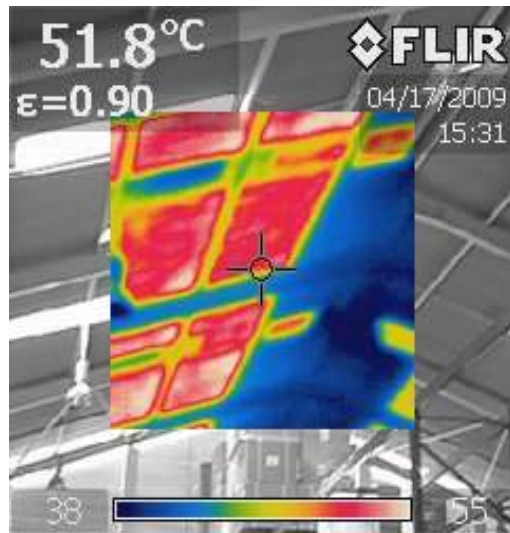
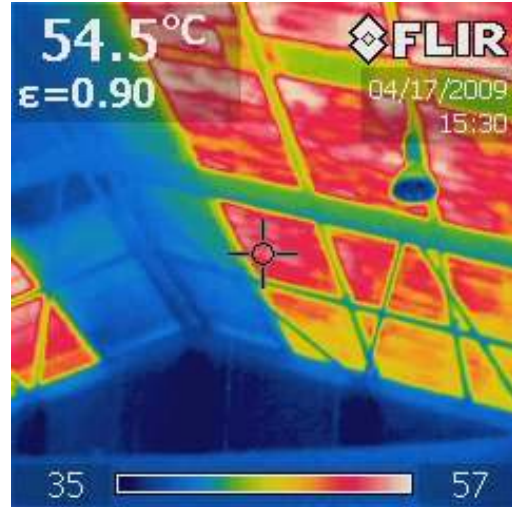


Thermal Picture - Before SolaCoat Applications – Exterior Warehouse





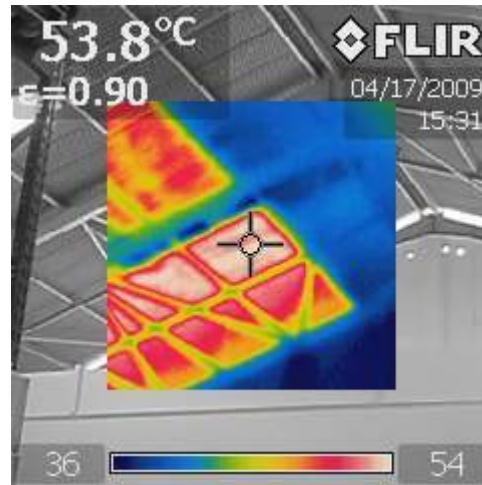
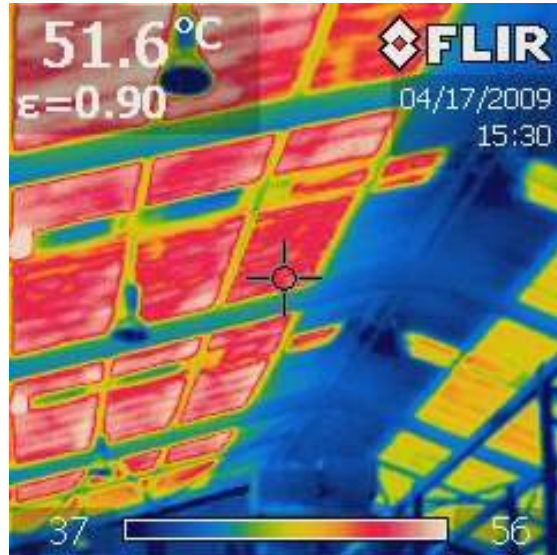
Thermal Picture – Before Solacoat Applications (Interior Warehouse)





Communications Pte Ltd

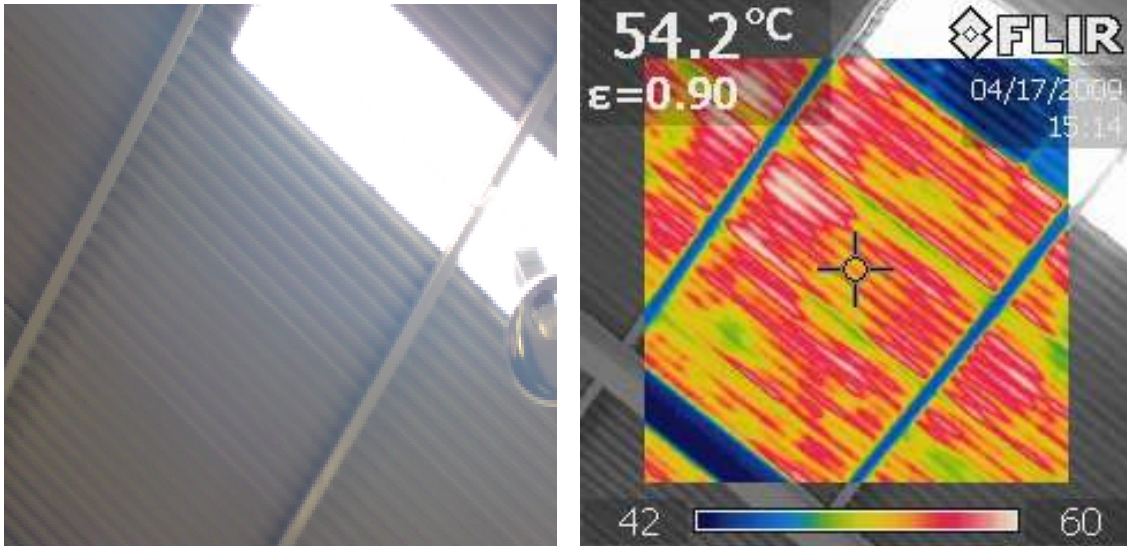
Thermal Picture – Before Solacoat Applications (Interior Warehouse)





Communications Pte Ltd

Thermal Picture – Before Solacoat Applications (Interior Warehouse)





Communications Pte Ltd

Picture – Before and After completion of Solacoat applications

Before Solacoat

After Solacoat





Communications Pte Ltd

Picture – Before and After completion of Solacoat applications

Before Solacoat



After Solacoat





Communications Pte Ltd

Picture – Before and After completion of Solacoat applications

Before Solacoat



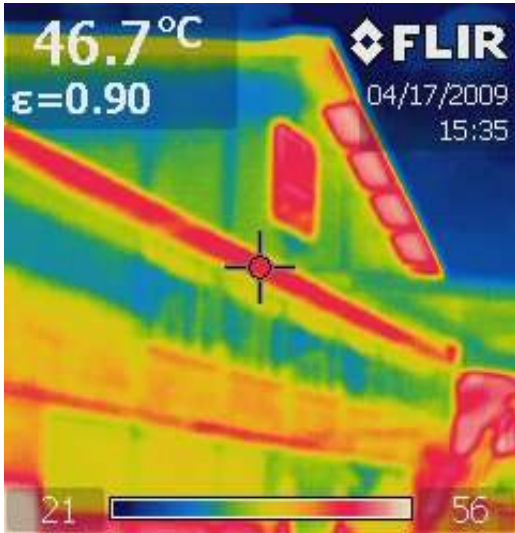
After Solacoat



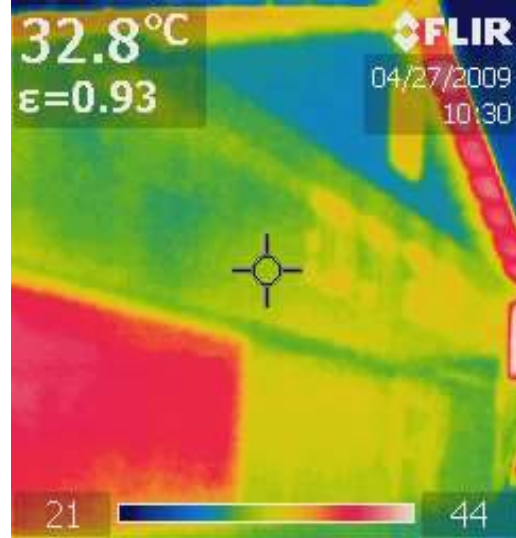


Thermal Picture – Before & After Solacoat Applications (Exterior Warehouse)

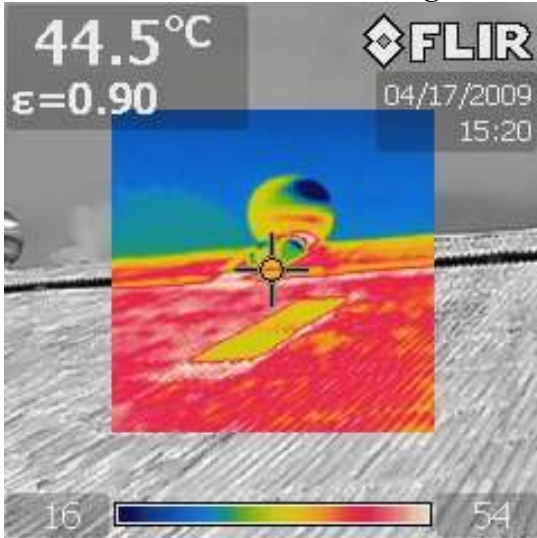
BEFORE COATING = 46.7Degree C



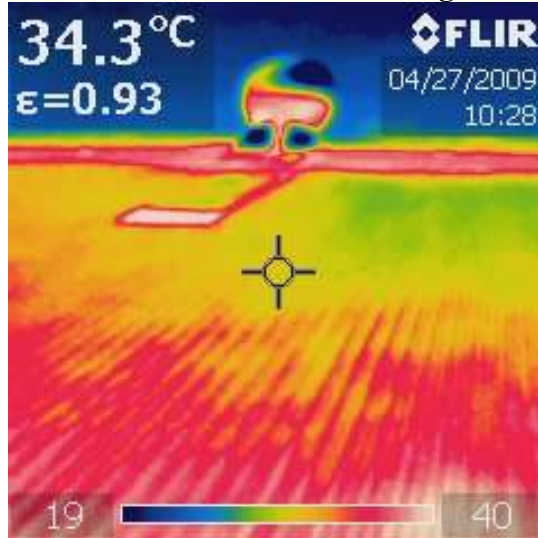
AFTER SOLACOAT = 32.8Degree C



BEFORE COATING = 44.5Degree C



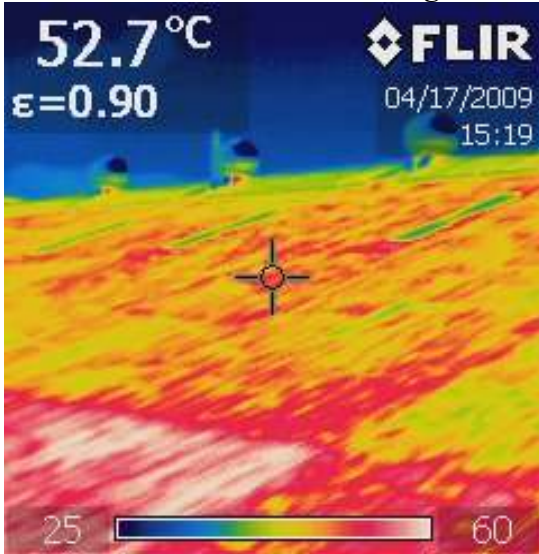
AFTER SOLACOAT = 34.3Degree C



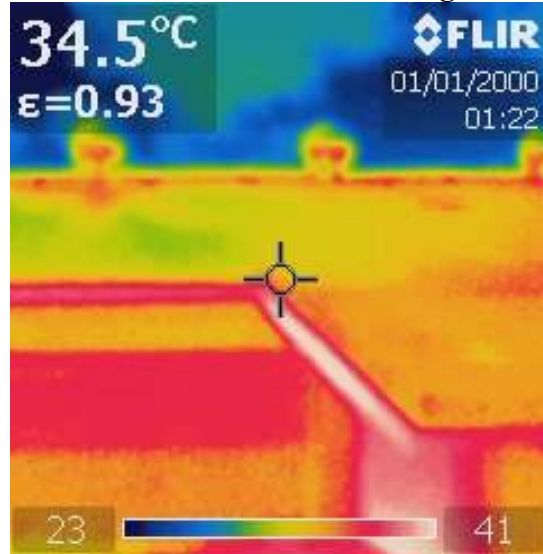


Thermal Picture – Before & After Solacoat Applications (Exterior Warehouse)

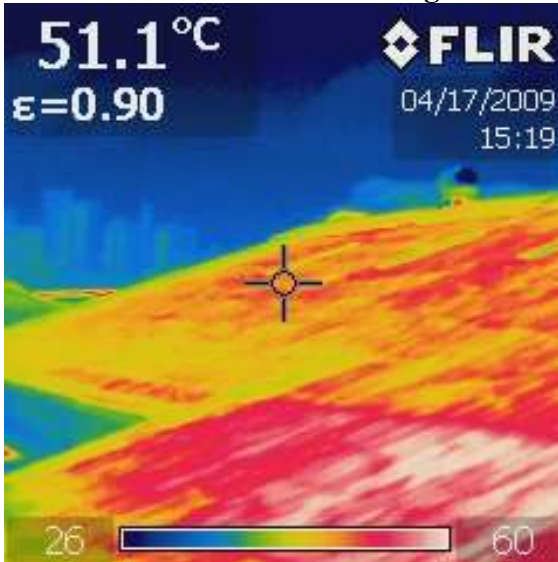
BEFORE COATING = 52.7Degree C



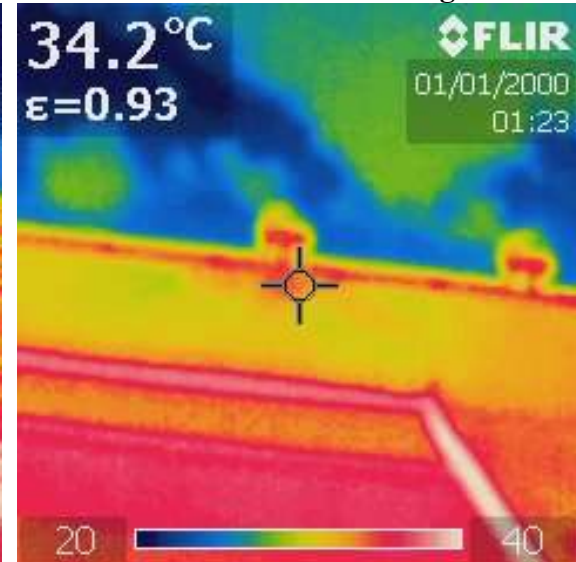
AFTER SOLACOAT = 34.5Degree C



BEFORE COATING = 51.1Degree C



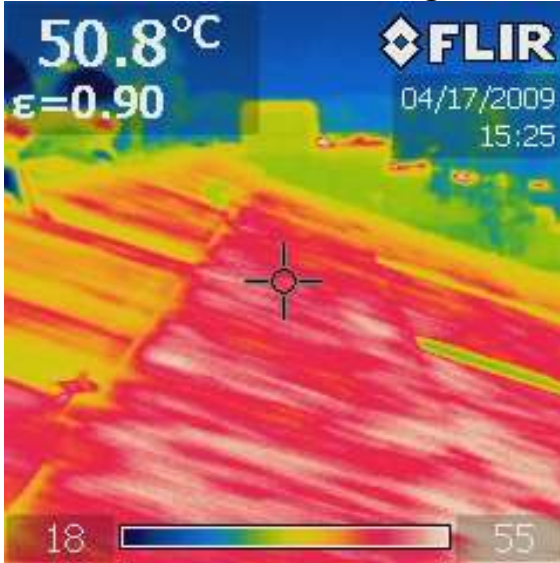
AFTER SOLACOAT = 34.2Degree C



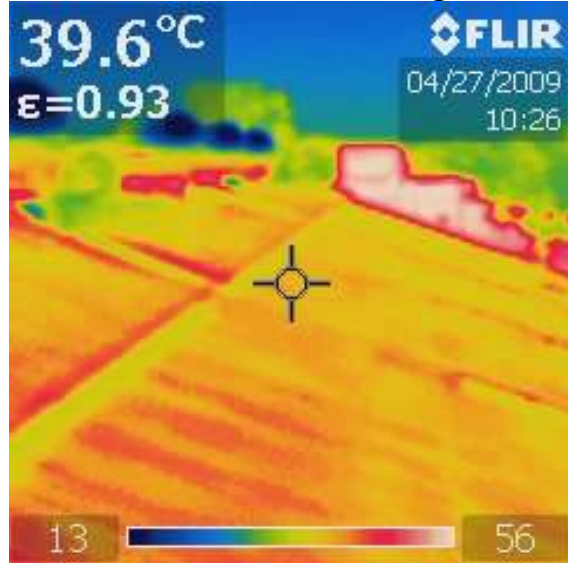


Thermal Picture – Before & After Solacoat Applications (Exterior Warehouse)

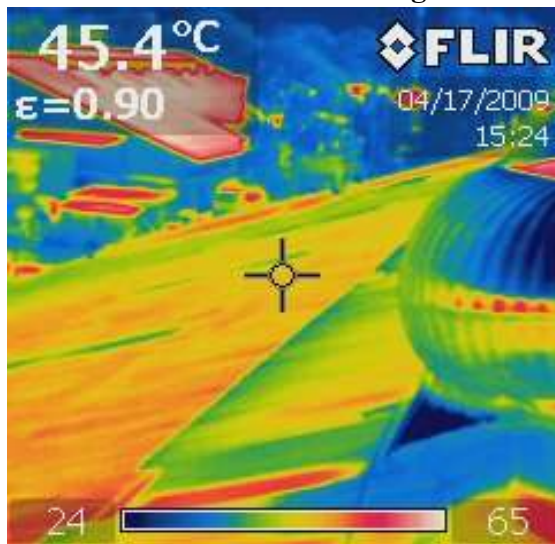
BEFORE COATING = 50.8Degree C



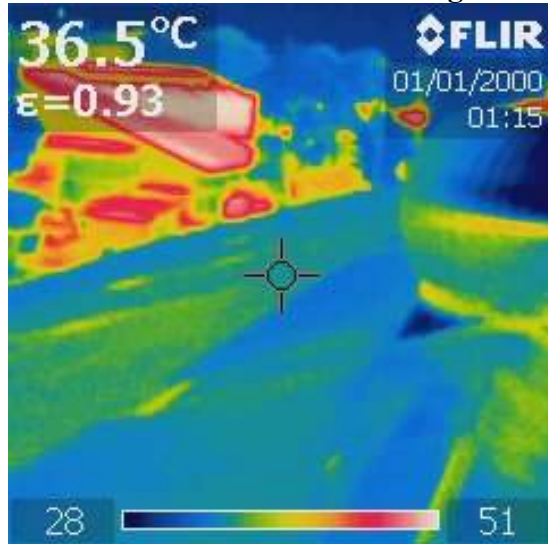
AFTER SOLACOAT = 39.6Degree C



BEFORE COATING =45.4Degree C



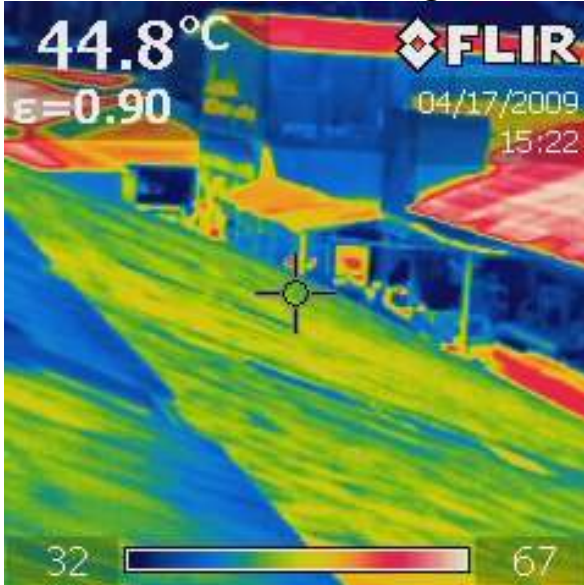
AFTER SOLACOAT = 36.5Degree C





Thermal Picture – Before & After Solacoat Applications (Exterior Warehouse)

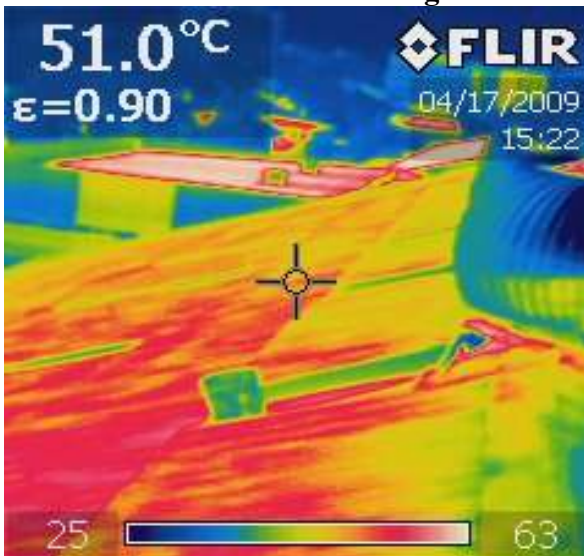
BEFORE COATING = 44.8Degree



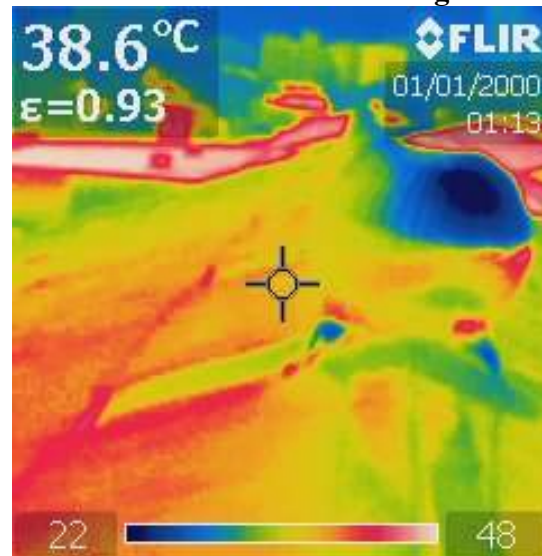
AFTER SOLACOAT = 35.7Degree



BEFORE COATING = 51.0Degree C



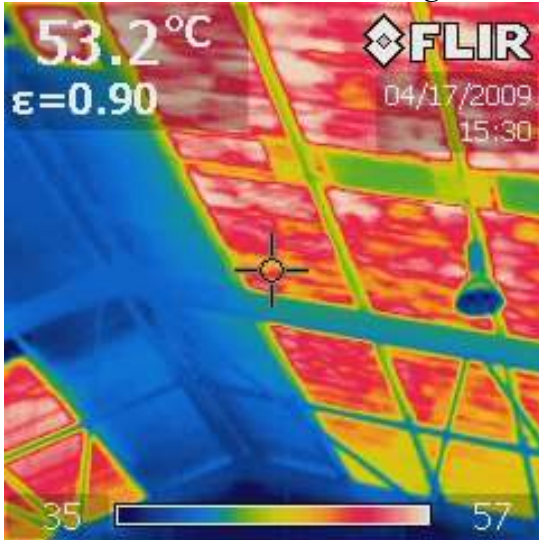
AFTER SOLACOAT = 38.6Degree C



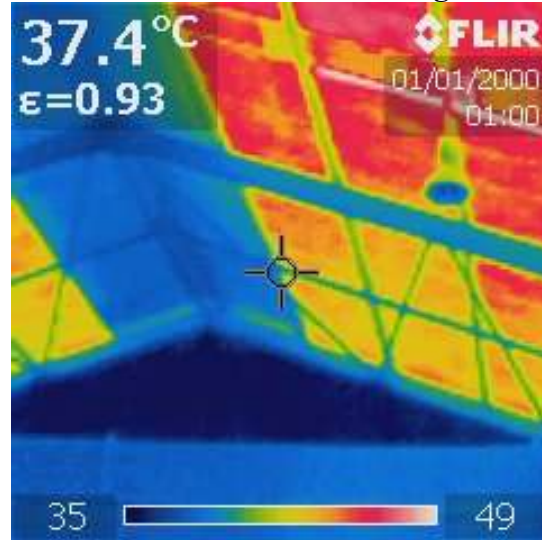


Thermal Picture – Before & After Solacoat Applications (Interior Warehouse)

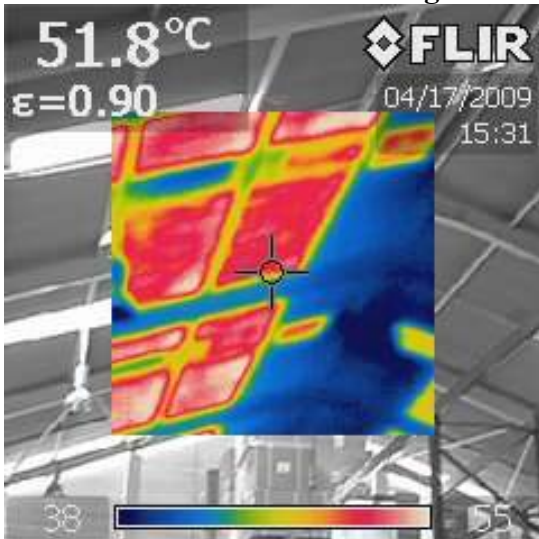
BEFORE COATING = 53.2Degree C



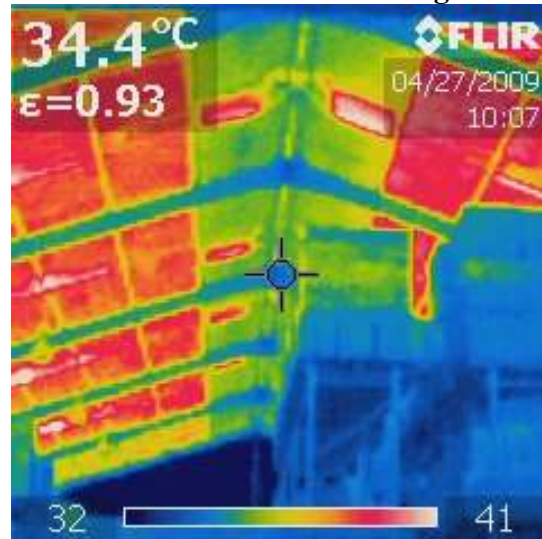
AFTER SOLACOAT = 37.4Degree C



BEFORE COATING = 51.8Degree C



AFTER SOLACOAT = 34.4Degree C

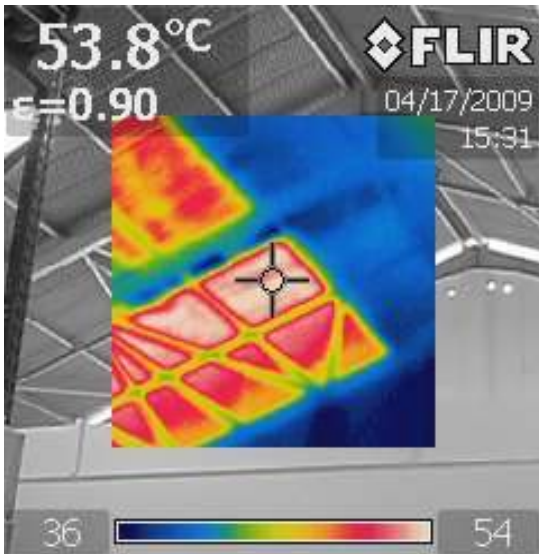




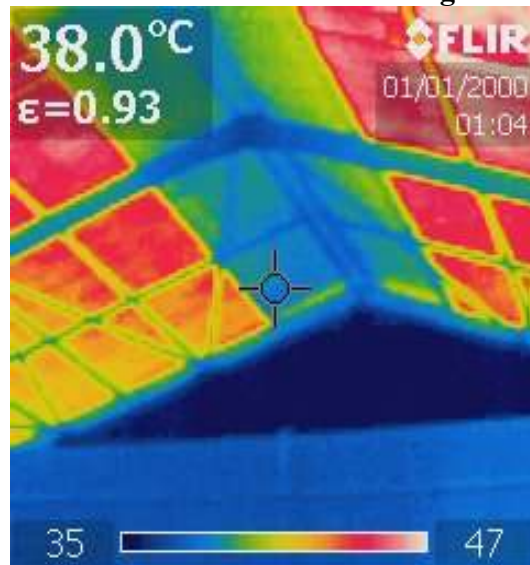
Communications Pte Ltd

Thermal Picture – Before & After Solacoat Applications (Interior Warehouse)

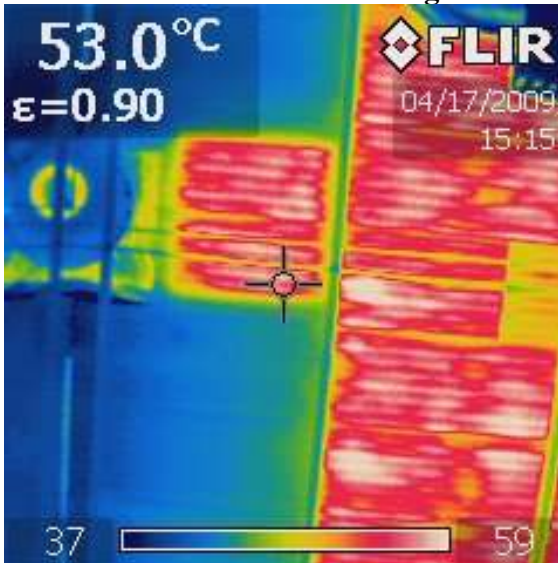
BEFORE COATING = 53.8Degree C



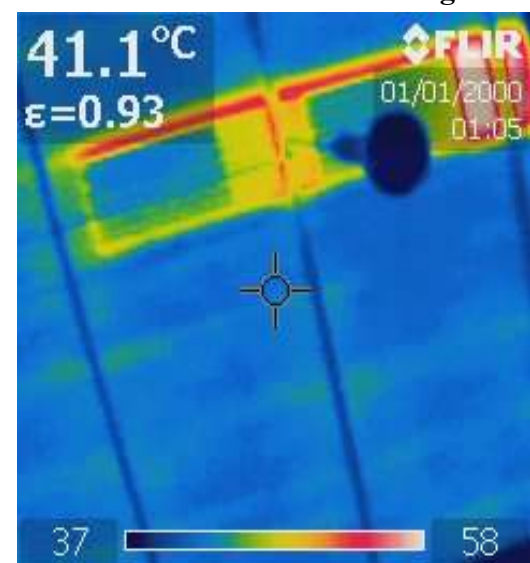
AFTER SOLACOAT = 38.0Degree C



BEFORE COATING = 53.0Degree C



AFTER SOLACOAT = 41.1Degree C





Findings and Conclusion

Despite a much Warmer Climax (Higher Ambient) after the completion of SOLACOAT application. SOLACOAT has attained and reduces the Roof Temperature significantly (See below Graph)

Before and After - Ambient temp cure :

Before Solacoat -Ambient Temperature in Black curve

After Solacoat – Ambient Temperature in Blue curve

Before and After – Roof Temperature :

Before Solacoat – Roof Temperature in Red curve

After Solacoar – Roof Temperature in Green curve

